

Comune di Fucecchio
Provincia di Firenze

PROPOSTA DI ATTUAZIONE DEL P.A. 13
(Già P.I.O. di C. 31 - Area Elementare nr° 3)

Area ex Saffa - Via Dante

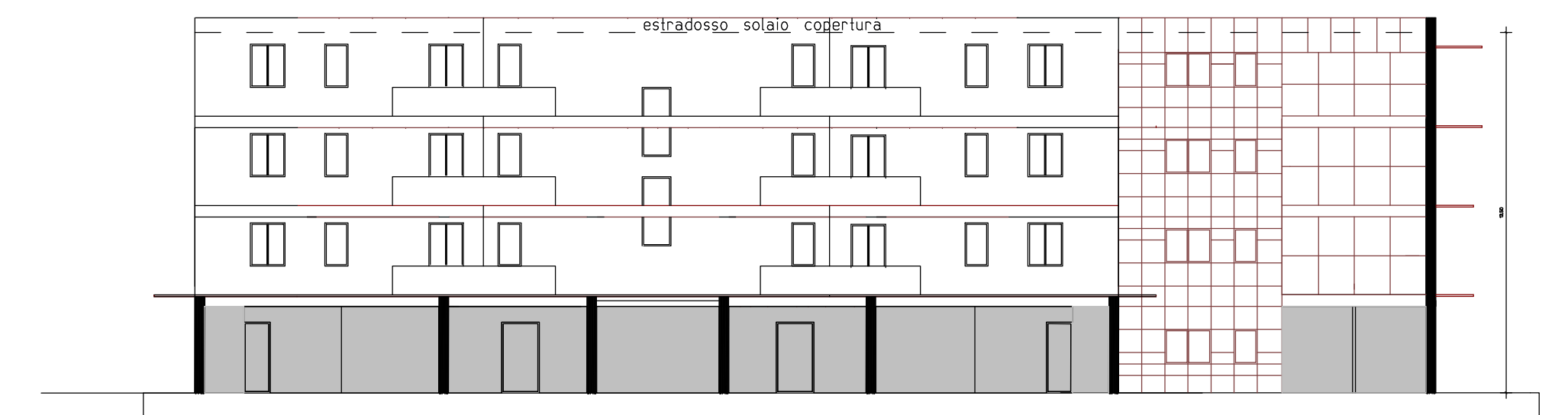
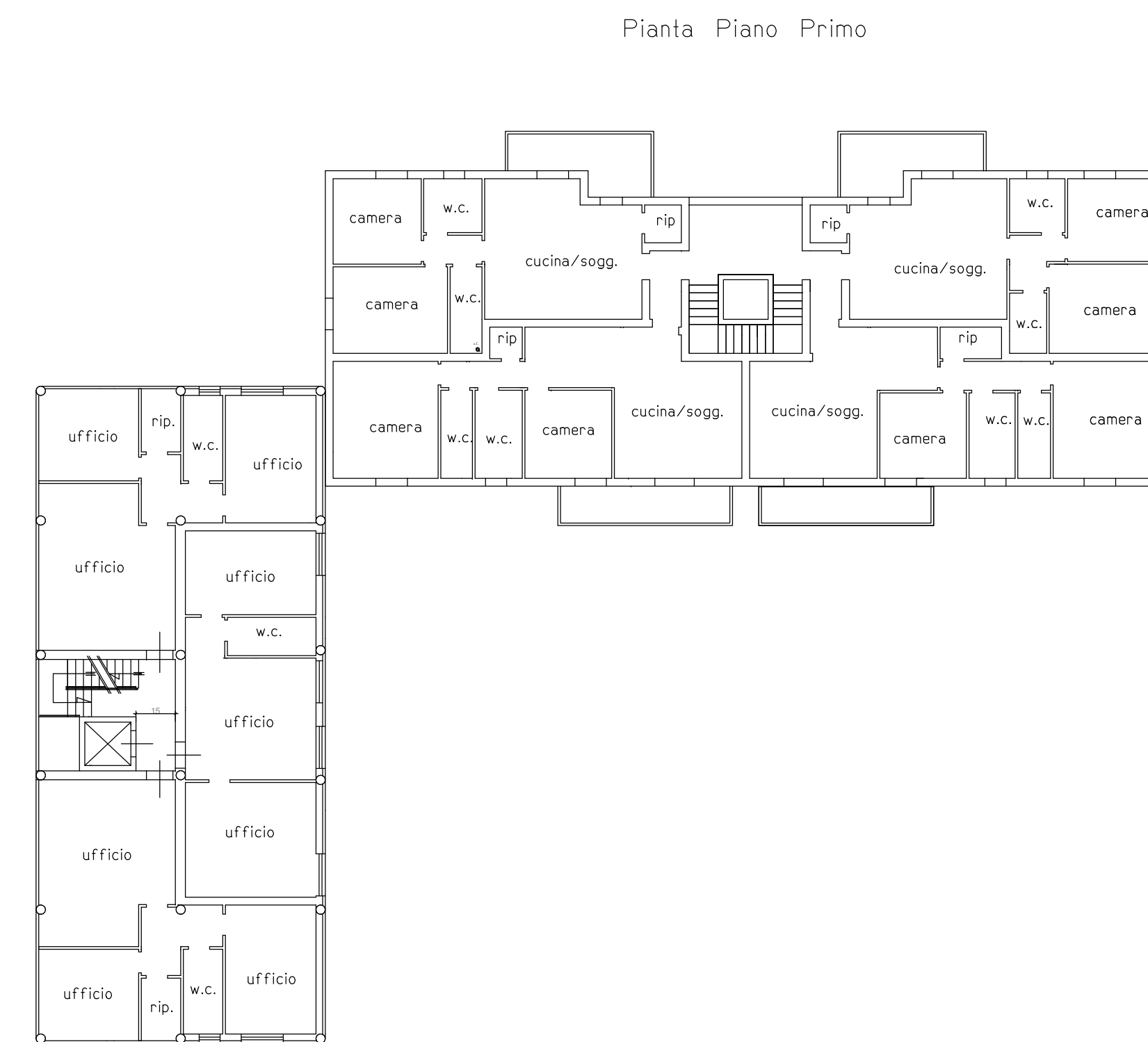
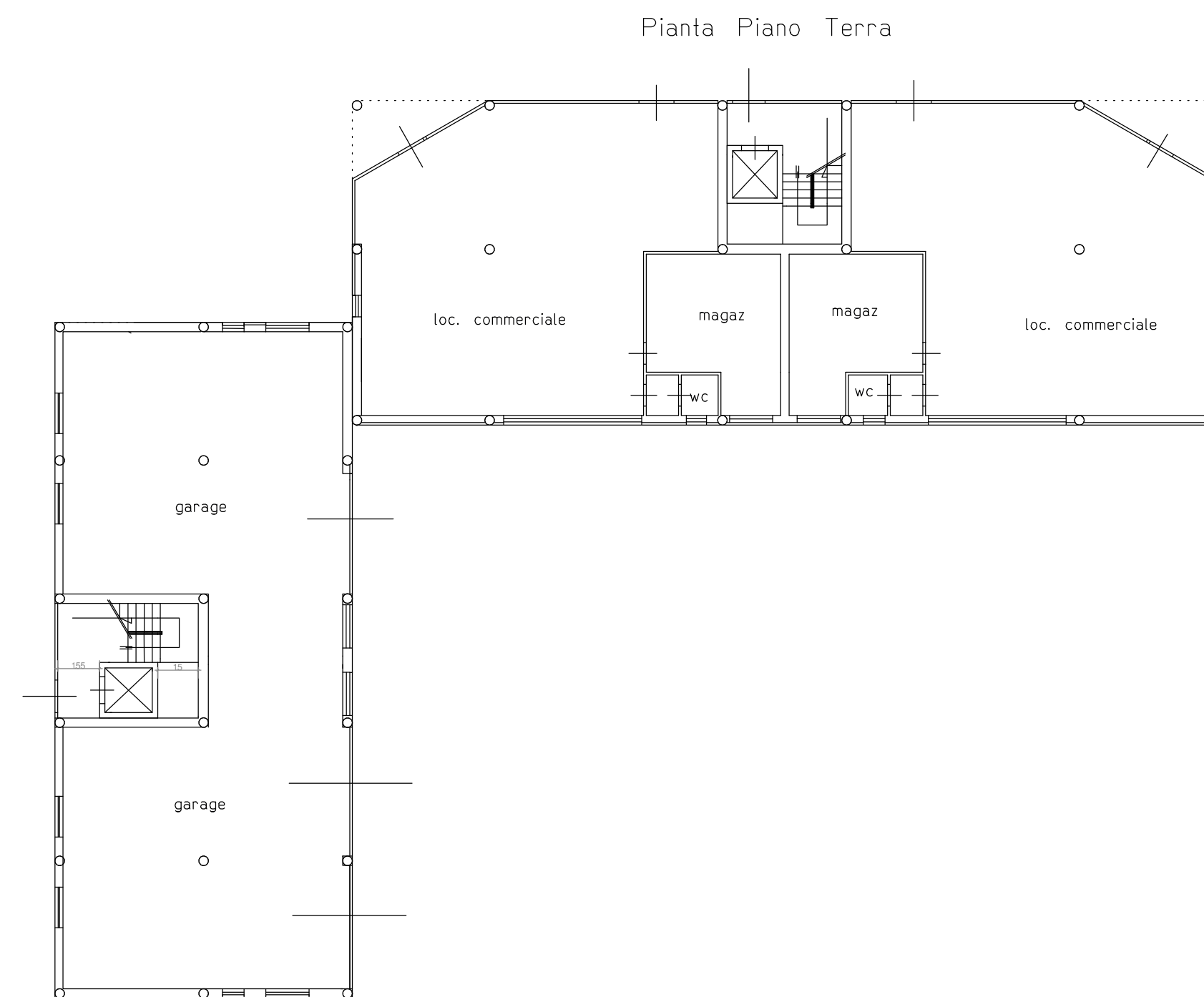
Proprietà : Soc. HIBISCUS S.r.l.
Via Dante, 131 - 50054 Fucecchio (FI)
tel/fax 0571 20004

Progettisti : *Ing. Antonio Pellegrini*
studio Associato d'Ingegneria

Via Ho chi Min, 50 - 56029 Santa Croce sull'Arno (PI)
tel. 0571 366557 fax. 0571 1979179

Geom. Alessandro Pizzuti
studio tecnico

Viale C. Colombo, 3 - 50054 Fucecchio (FI)
tel/fax 0571 21007 cell. 348 6514260



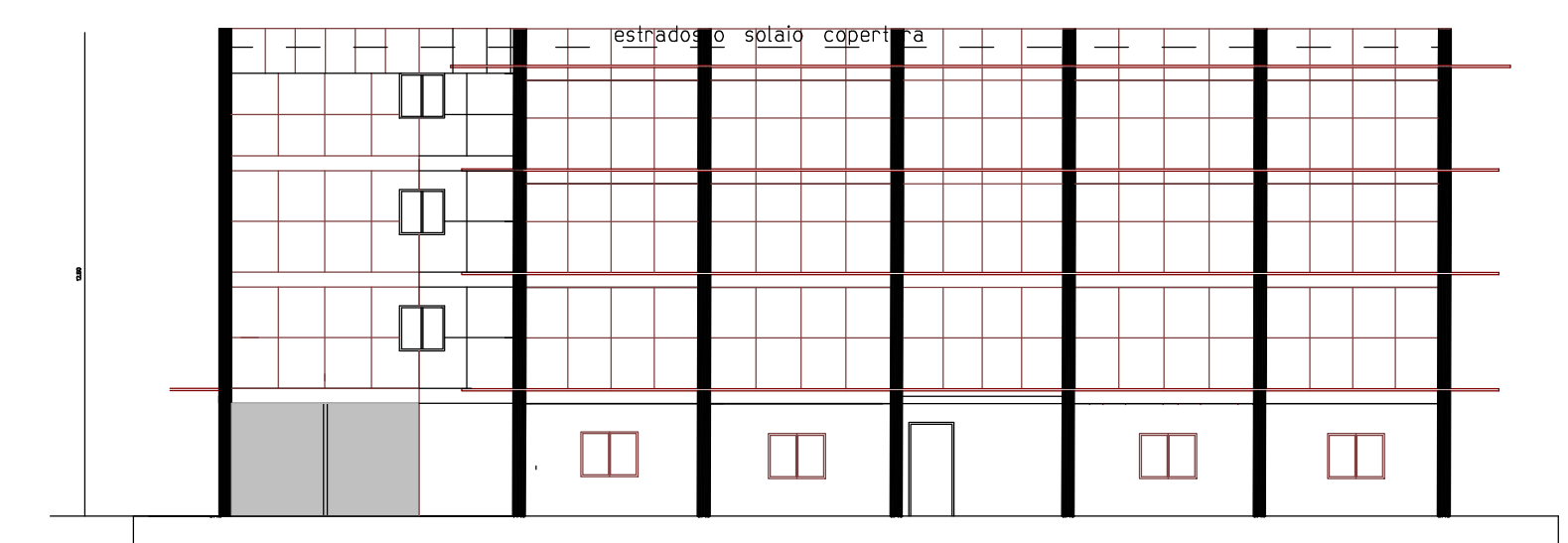
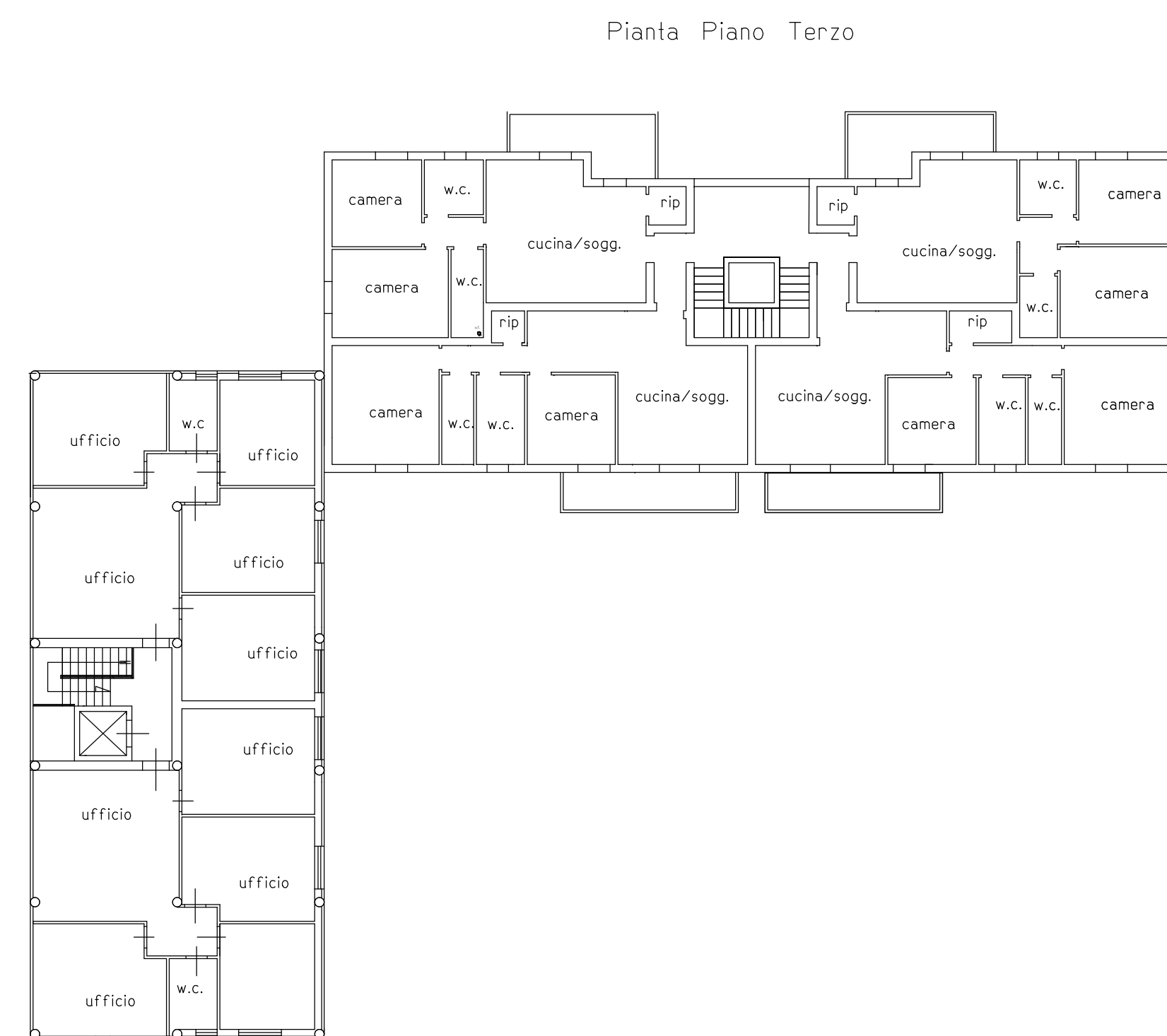
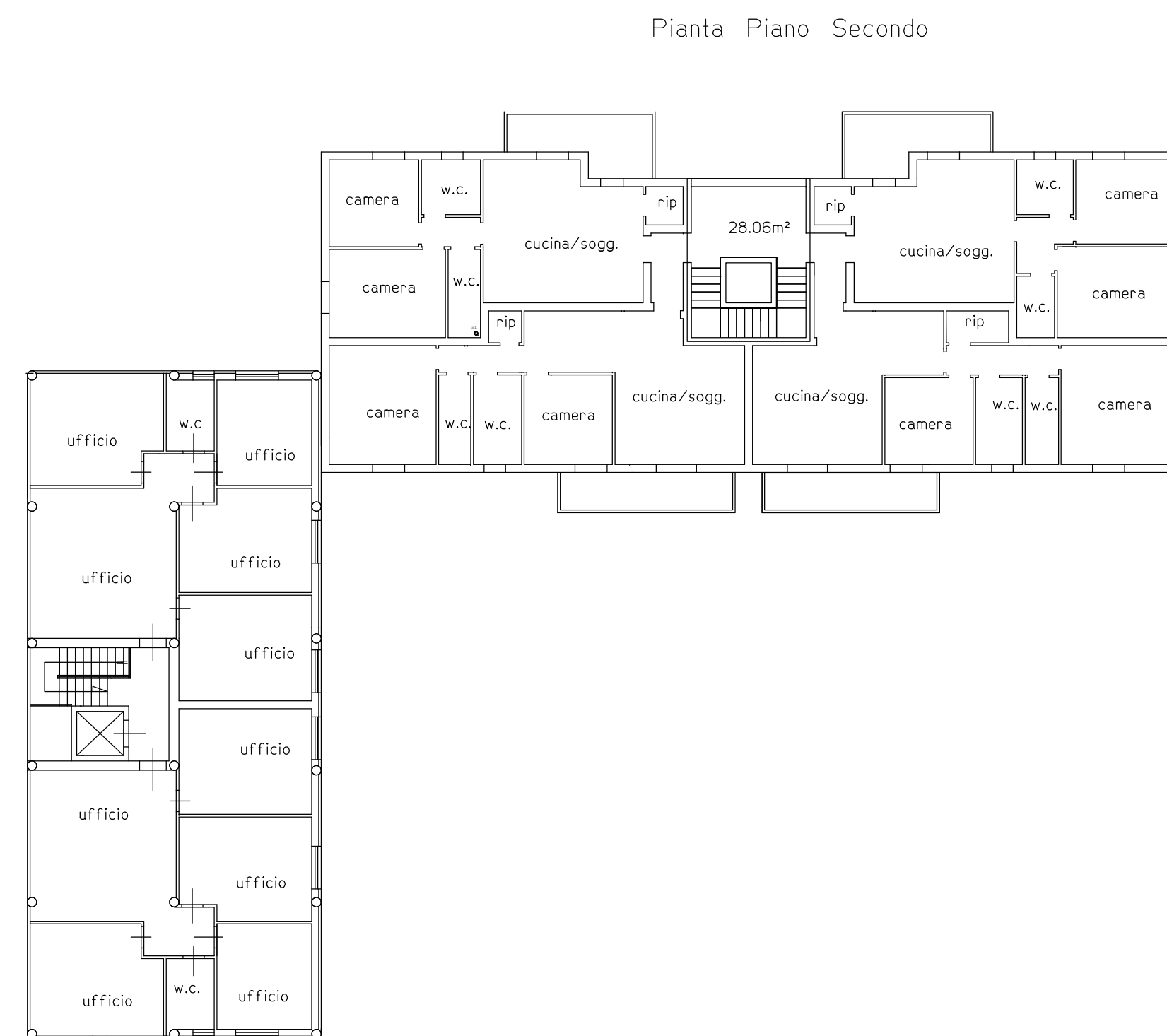
Prospetto Frontale Edificio Fronte Strada

14

Tipologie Edilizie Scala 1: 200

Lotto L Sub-Comparto 1

GENNAIO 2022



Prospetto Frontale Edificio perpendicolare alla strada