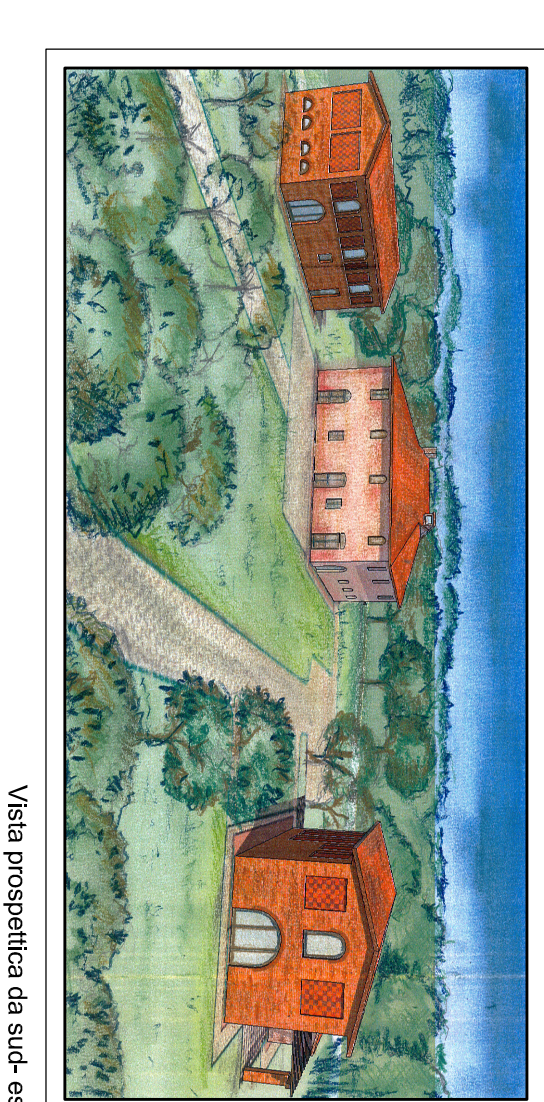
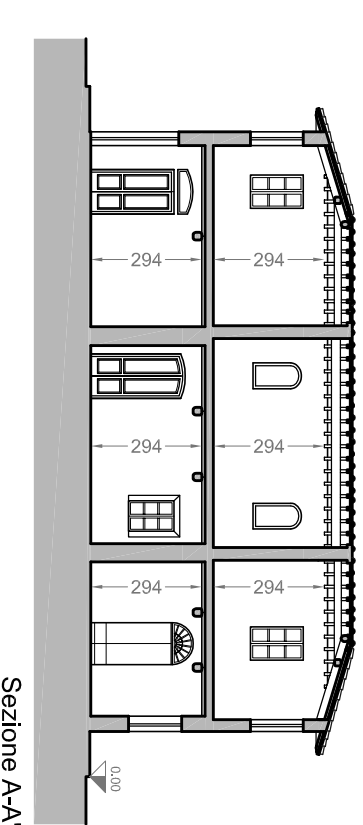
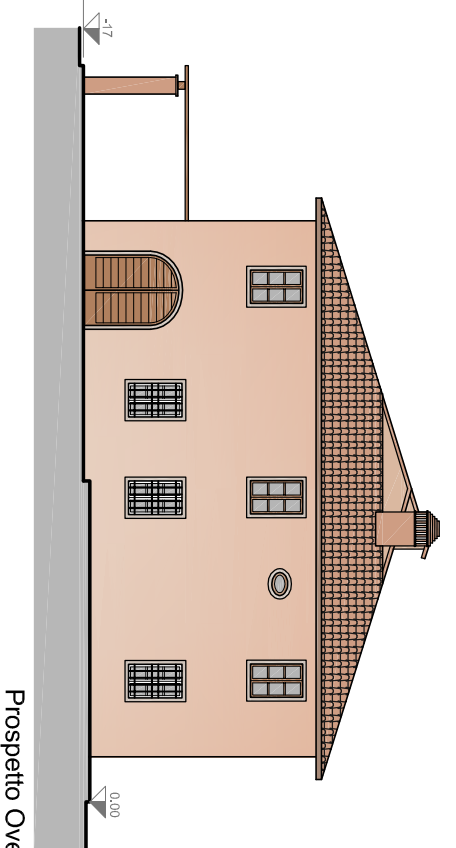
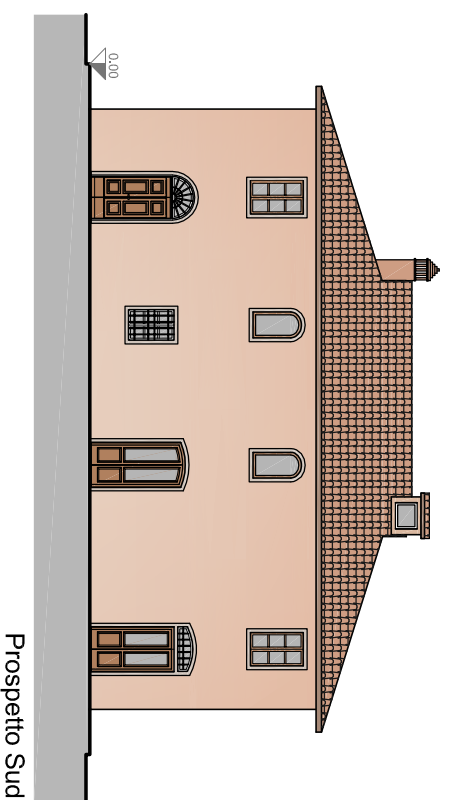
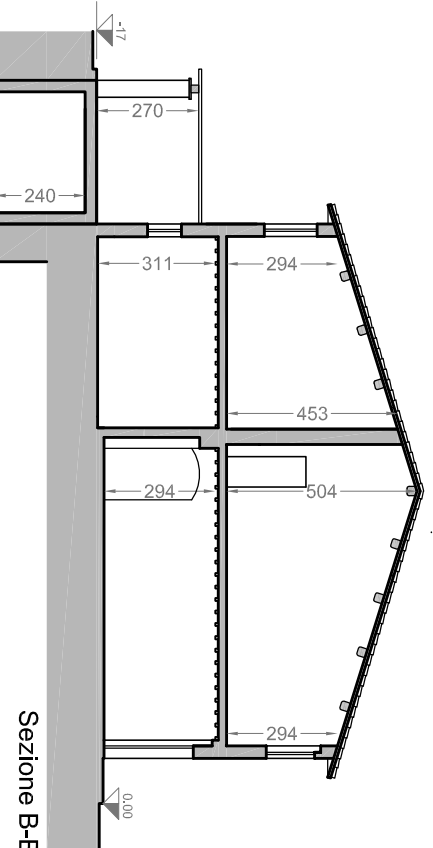
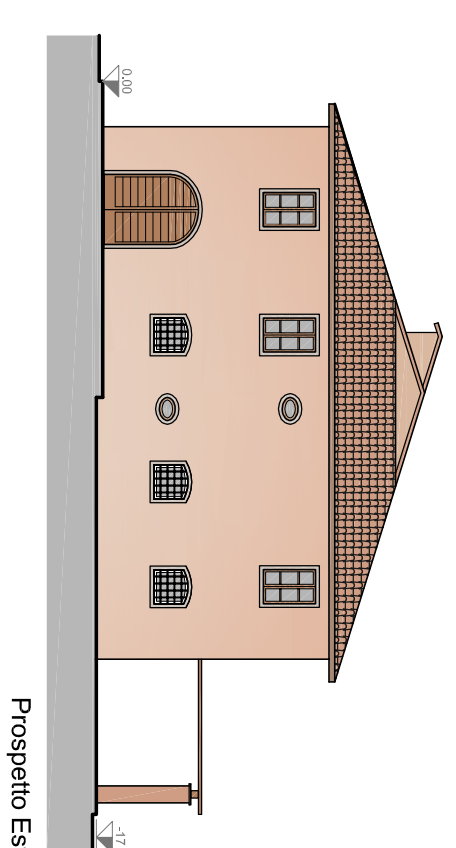
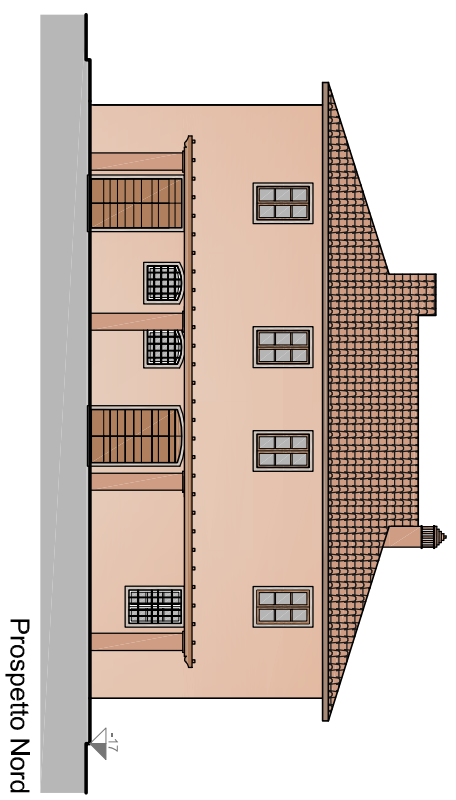


1 - FABBRICATO PRINCIPALE

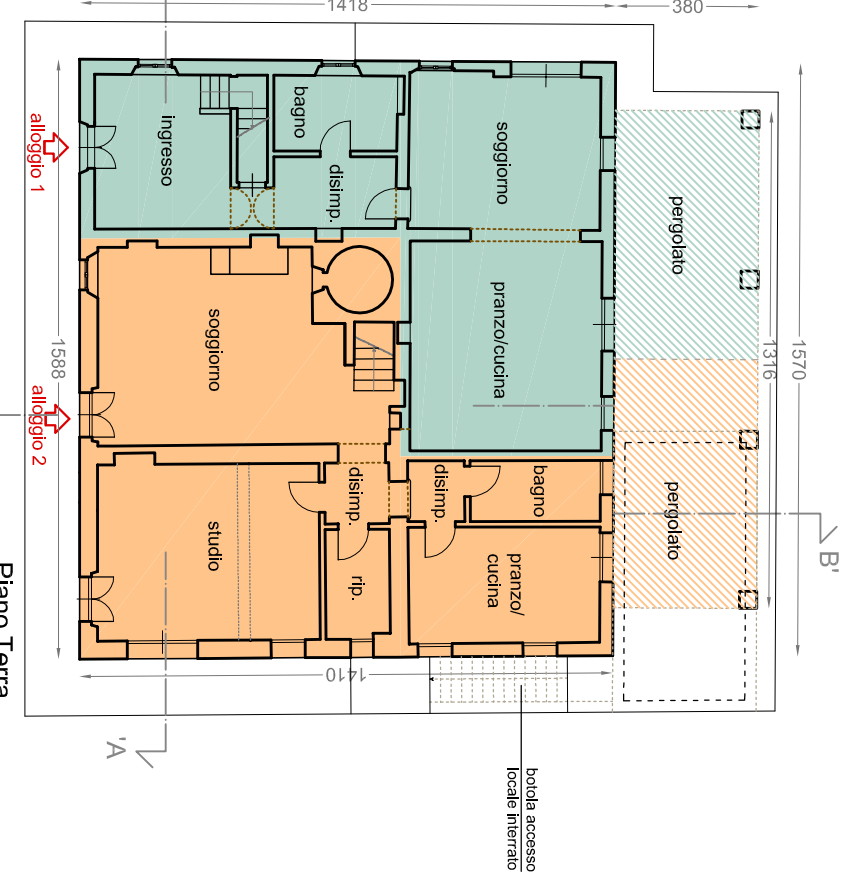
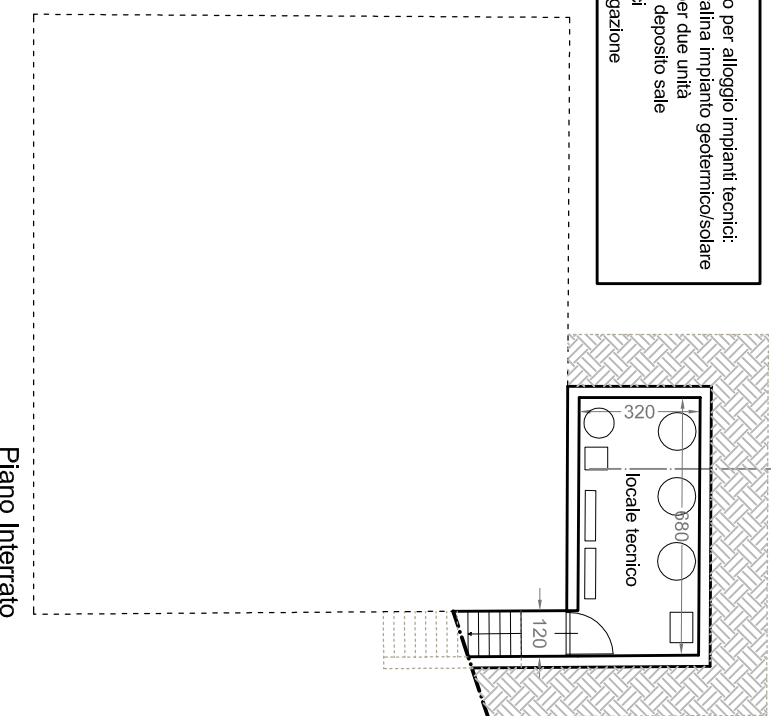


Visita prospettica da sud-est

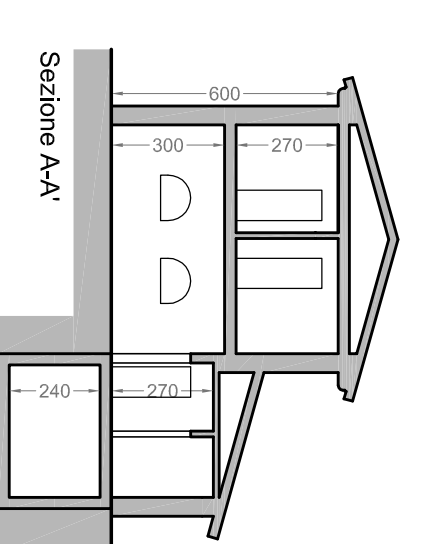
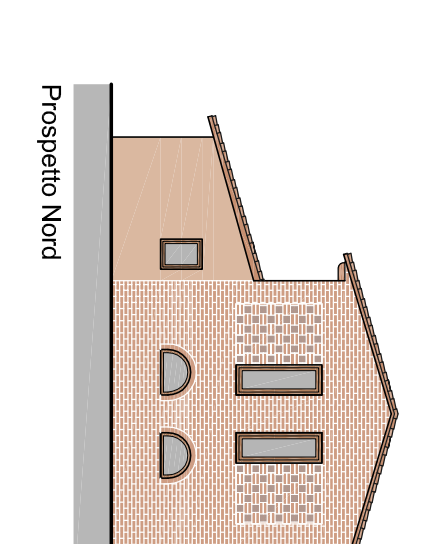
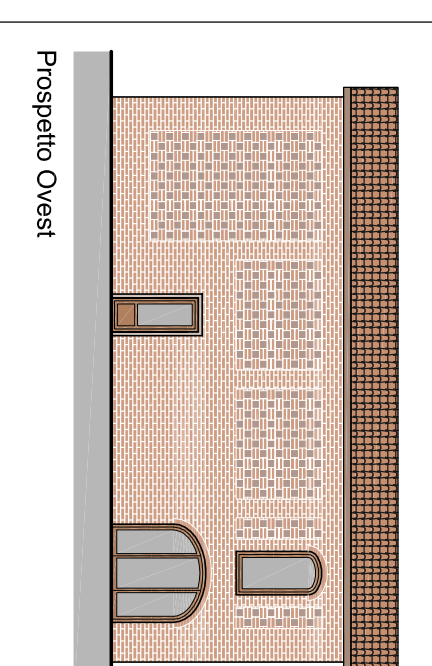
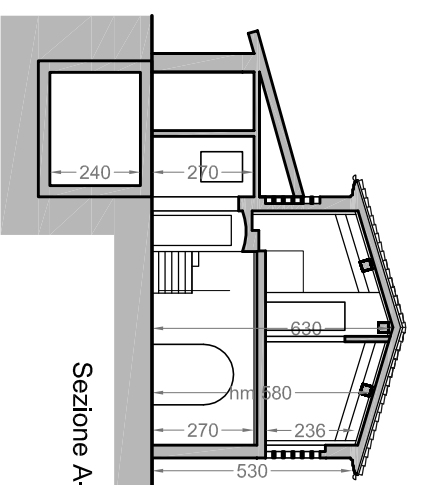
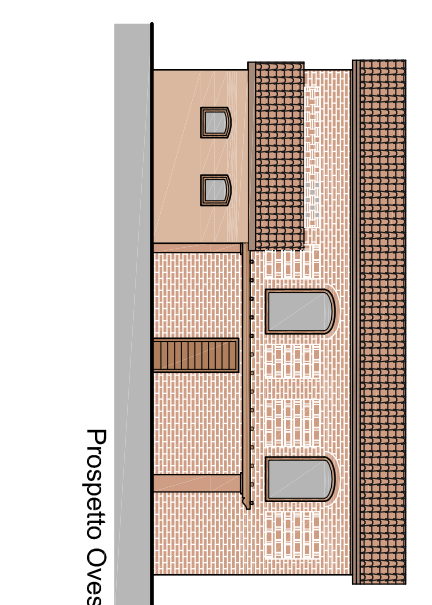
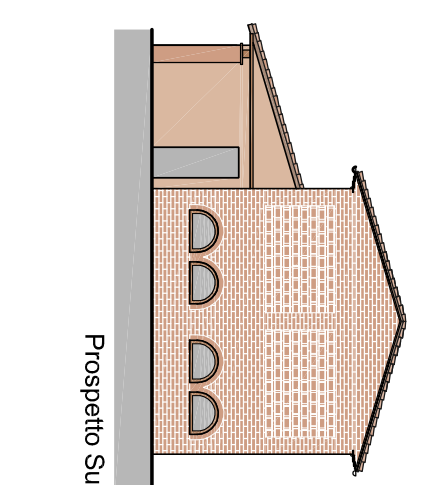
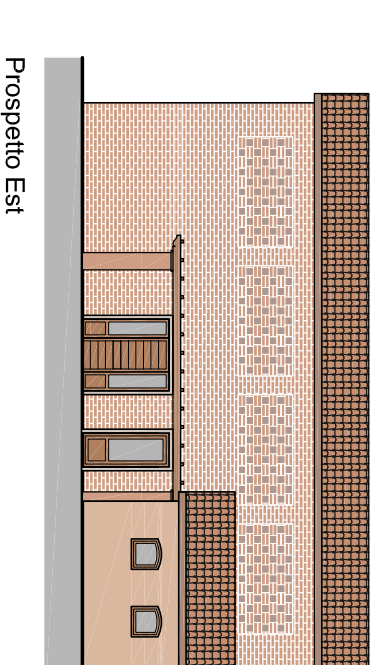
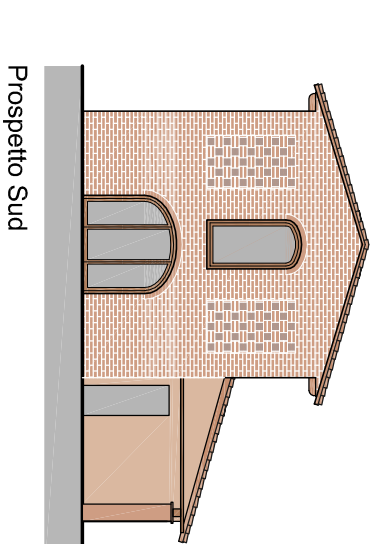
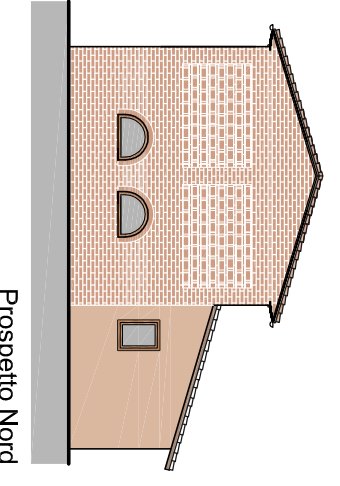
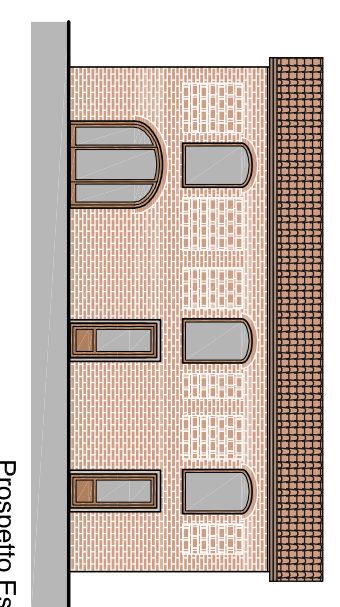


Visita prospettica da nord (torrione Stollia)

Locale interrato per alloggio tripartito  
- adduzione e deposito sale  
- centralina impiantistica

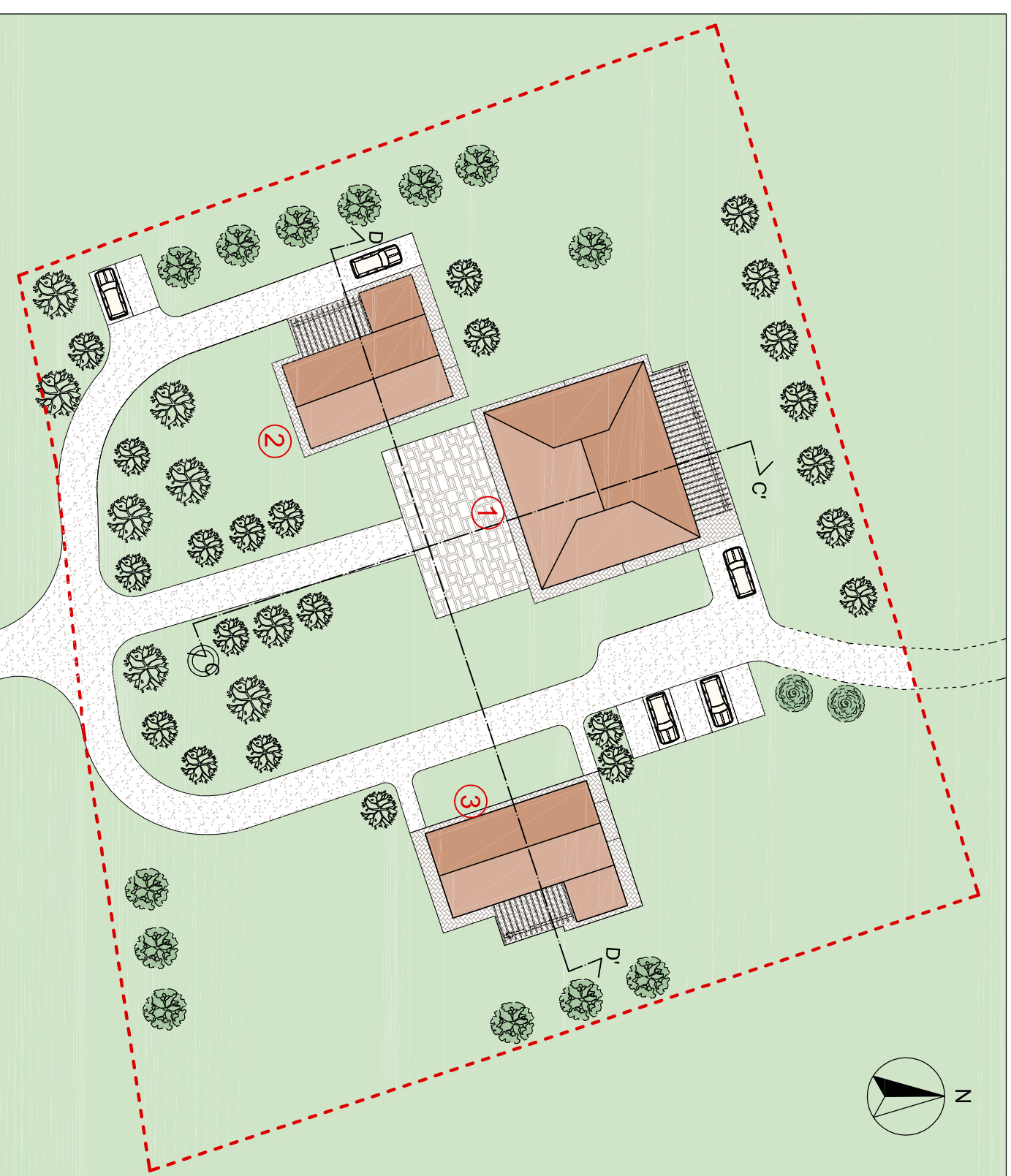


2 - EX-FIENILE

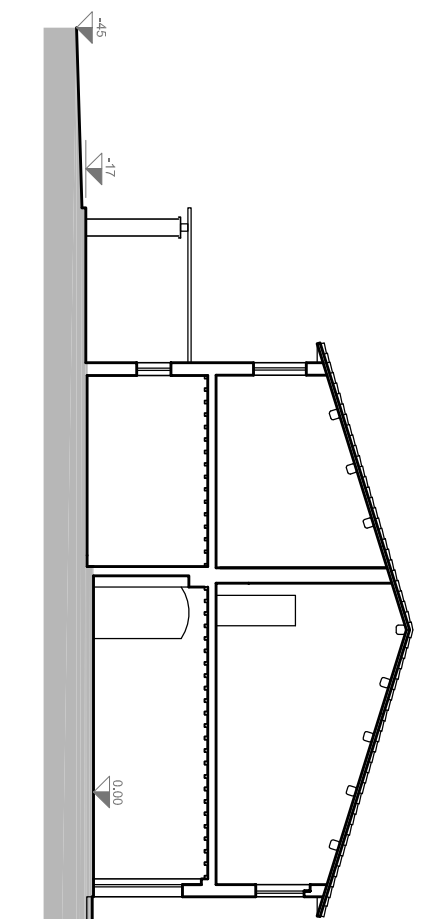
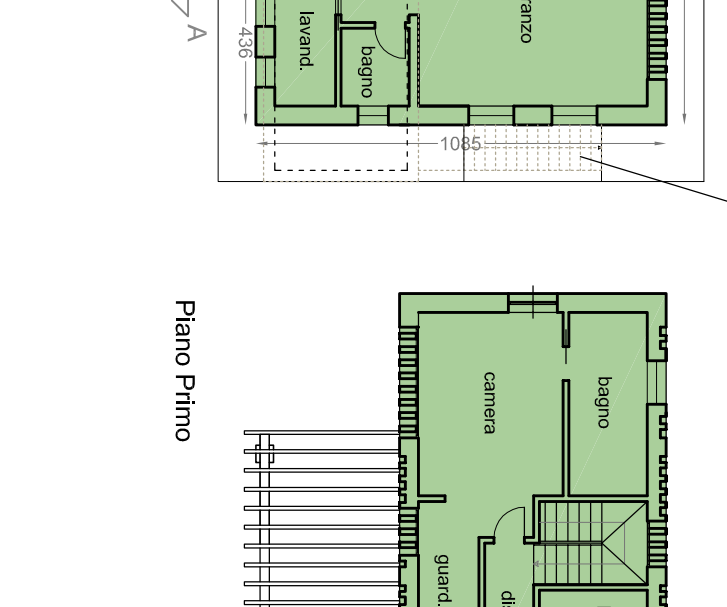
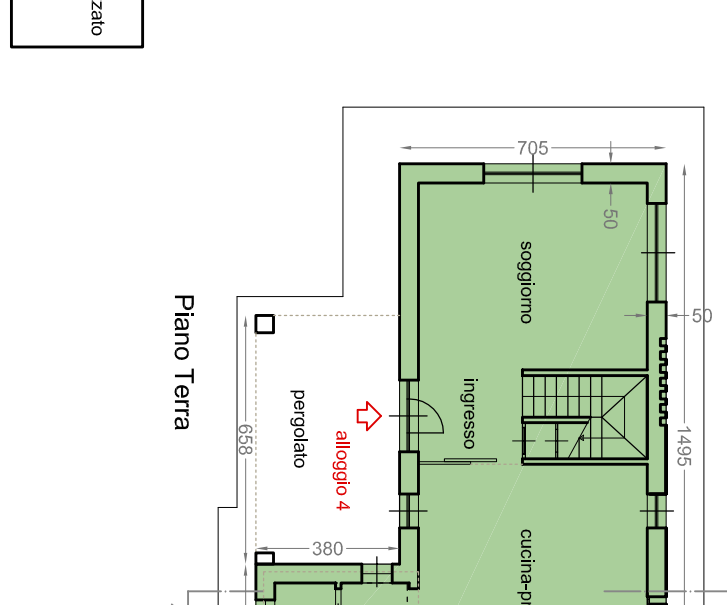
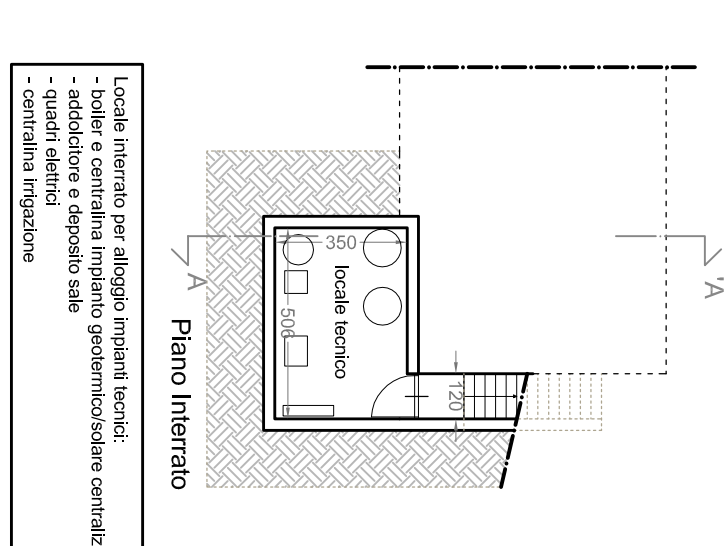
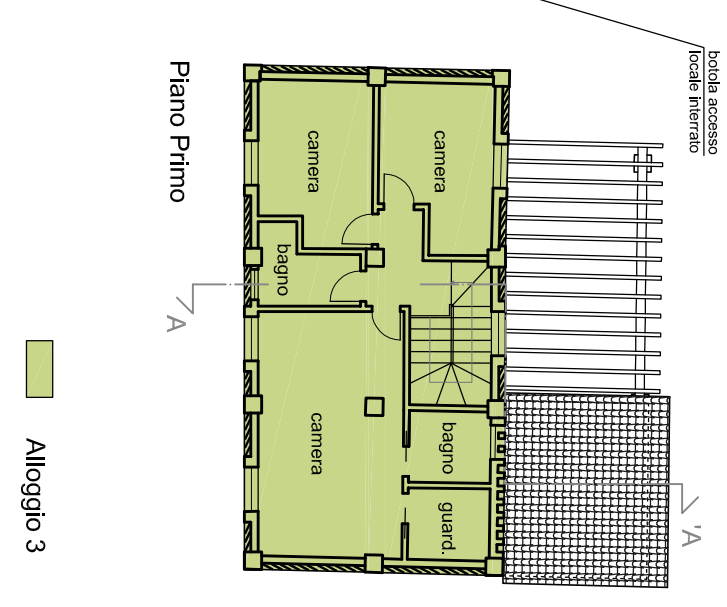
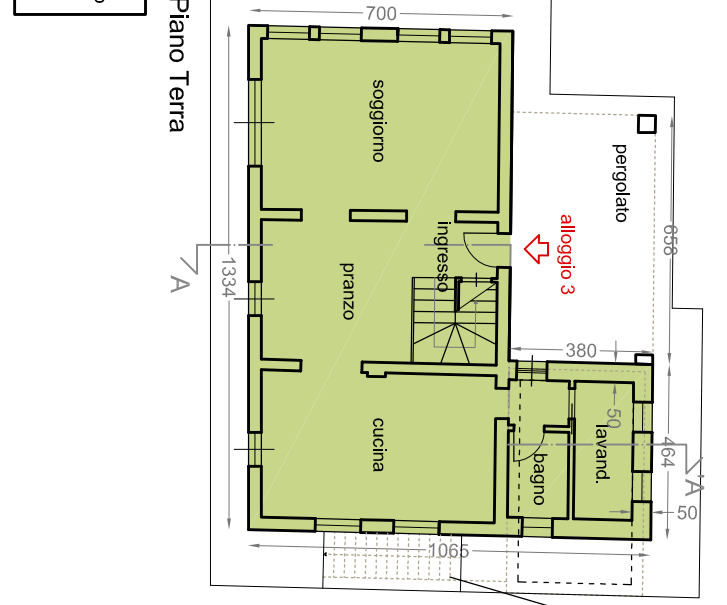
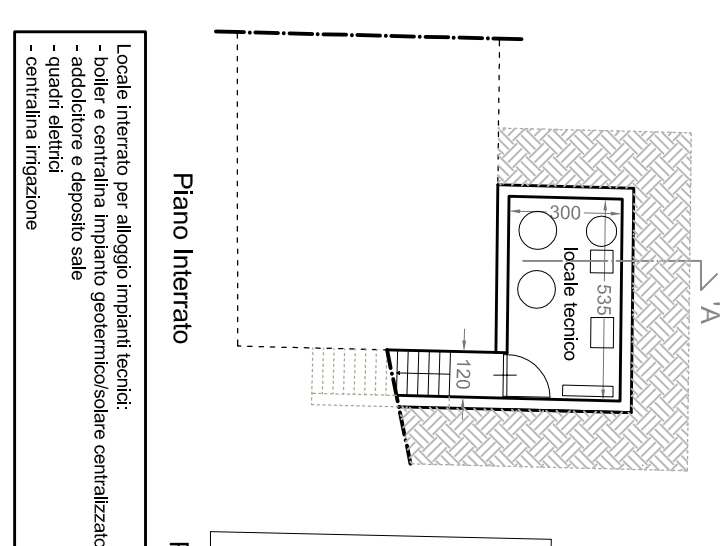


3 - NUOVA UNITA' ABITATIVA

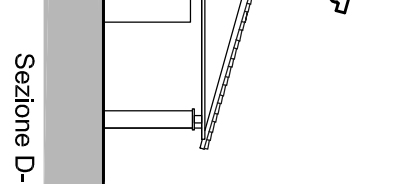
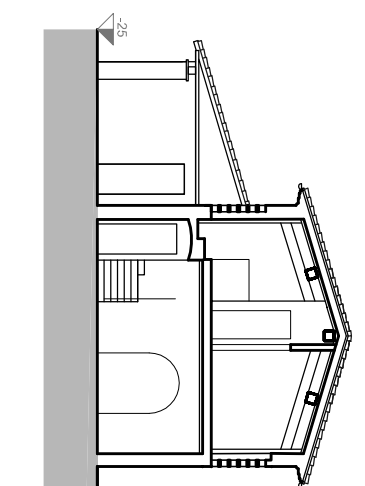
unità abitativa ottenuta dal recupero di superfici e volumi oggetto di demolizione



Planimetria generale Stato Modificato - Scala 1:500



Sezione C-C'



Sezione D-D'